

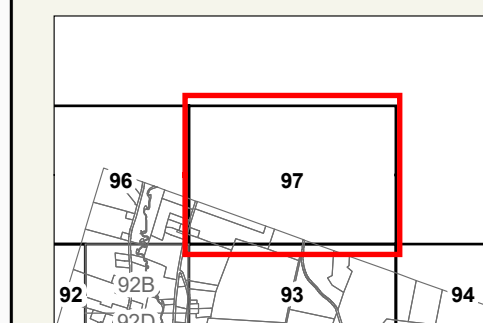


LEGEND

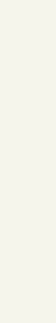
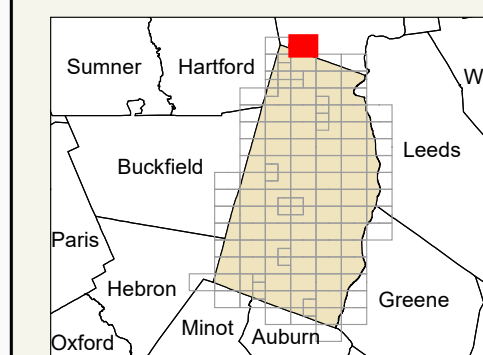
- PROPERTY LINE
- OLD PROPERTY LINE
- PUBLIC RIGHT-OF-WAY
- PRIVATE RIGHT-OF-WAY
- CITY/TOWN LIMIT
- EASEMENT
- UTILITY RIGHT-OF-WAY
- HYDROLOGY
- PARCEL NUMBER
- ACREAGE
- CALCULATED ACREAGE
- DIMENSION
- SURVEY LOT NUMBER

FOR ASSESSMENT PURPOSES ONLY NOT FOR PROPERTY CONVEYANCES. THE TOWN OF TURNER AND ITS MAPPING CONTRACTORS ASSUME NO LEGAL RESPONSIBILITY FOR THE INFORMATION CONTAINED HEREIN.

ORIGINAL MAPPING BY JAMES W. SEWELL COMPANY OLD TOWN, MAINE



SHEET INDEX



Previous Revisions:

4-1-2010	4-1-2011	4-1-2014
4-1-2015	4-1-2016	4-1-2017
4-1-2019	4-1-2020	4-1-2021

Updated as of April 1, 2023



Livermore

MAP 96
MAP 97

MAP 92B
MAP 93

MAP 97
MAP 93

MAP 93
MAP 94

