

MAP 67  
MAP 61

MAP 67  
MAP 68

Tax Map  
61

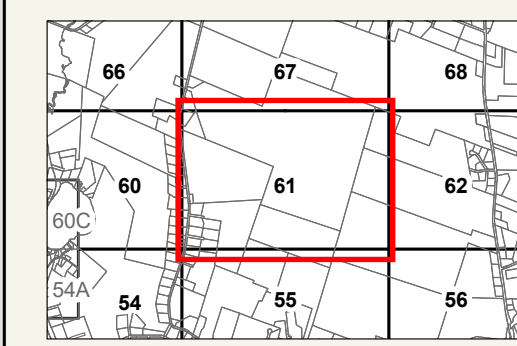
TURNER  
MAINE



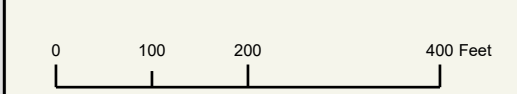
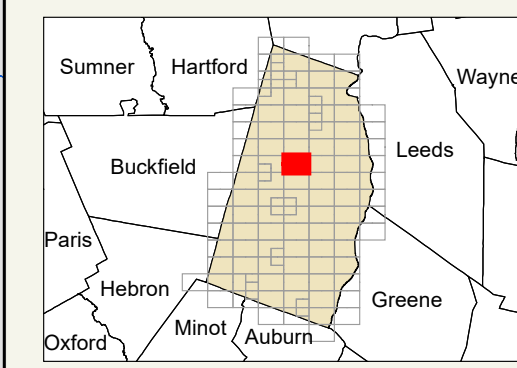
LEGEND

- PROPERTY LINE
- OLD PROPERTY LINE
- PUBLIC RIGHT-OF-WAY
- PRIVATE RIGHT-OF-WAY
- CITY/TOWN LIMIT
- EASEMENT
- UTILITY RIGHT-OF-WAY
- HYDROLOGY
- PARCEL NUMBER
- ACREAGE
- CALCULATED ACREAGE
- DIMENSION
- SURVEY LOT NUMBER

FOR ASSESSMENT PURPOSES ONLY NOT FOR PROPERTY CONVEYANCES. THE TOWN OF TURNER AND ITS MAPPING CONTRACTORS ASSUME NO LEGAL RESPONSIBILITY FOR THE INFORMATION CONTAINED HEREIN.  
ORIGINAL MAPPING BY JAMES W. SEWALL COMPANY OLD TOWN, MAINE

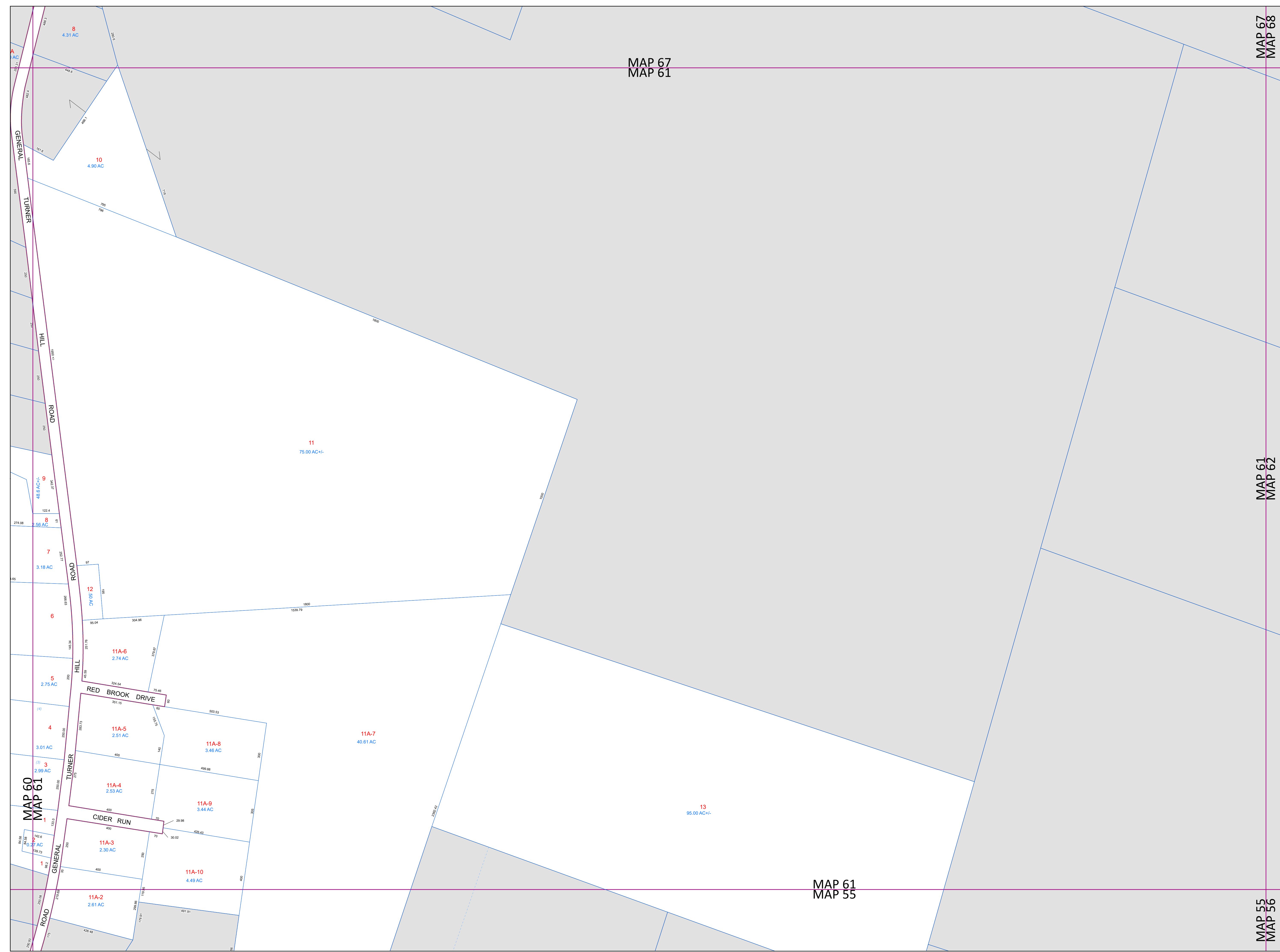


SHEET INDEX



Previous Revisions:  
4-1-2010 4-1-2011 4-1-2014  
4-1-2015 4-1-2016 4-1-2017  
4-1-2019 4-1-2020 4-1-2021

Updated as of April 1, 2023



MAP 61  
MAP 62

MAP 55  
MAP 56

MAP 61  
MAP 55

MAP 60  
MAP 61