

MAP 49  
MAP 50

MAP 50  
MAP 51

MAP 50  
MAP 43

Tax Map  
43

TURNER  
MAINE

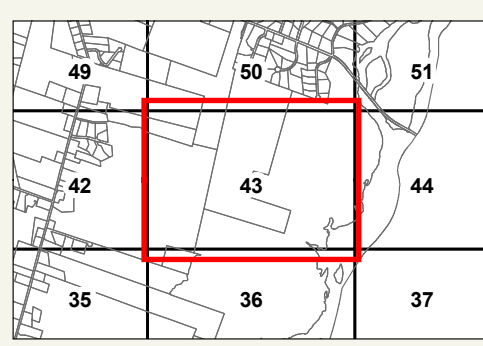


LEGEND

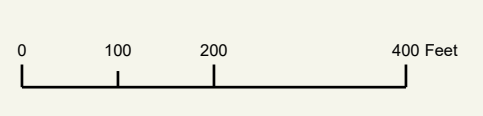
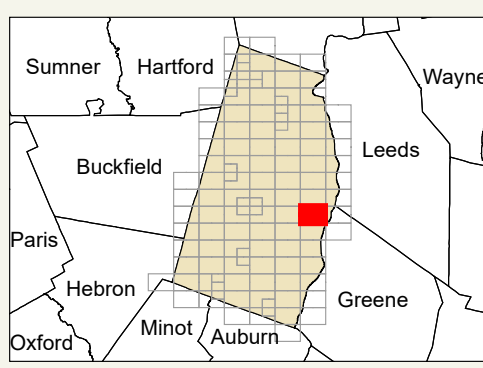
- PROPERTY LINE
- OLD PROPERTY LINE
- PUBLIC RIGHT-OF-WAY
- PRIVATE RIGHT-OF-WAY
- CITY/TOWN LIMIT
- EASEMENT
- UTILITY RIGHT-OF-WAY
- HYDROLOGY
- PARCEL NUMBER
- ACREAGE
- CALCULATED ACREAGE
- DIMENSION
- SURVEY LOT NUMBER

FOR ASSESSMENT PURPOSES ONLY NOT FOR PROPERTY CONVEYANCES. THE TOWN OF TURNER AND ITS MAPPING CONTRACTORS ASSUME NO LEGAL RESPONSIBILITY FOR THE INFORMATION CONTAINED HEREIN.

ORIGINAL MAPPING BY  
JAMES W. SEWALL COMPANY  
OLD TOWN, MAINE



SHEET INDEX



Previous Revisions:  
4-1-2010 4-1-2011 4-1-2014  
4-1-2015 4-1-2016 4-1-2017  
4-1-2019 4-1-2020 4-1-2021

Updated as of April 1, 2023



MAP 42  
MAP 43

MAP 43  
MAP 44

MAP 35  
MAP 36

MAP 43  
MAP 36

MAP 36  
MAP 37

1  
153.00 AC +/-

3  
10.00 AC +/-

Androscoggin River