

MAP 42
MAP 43

MAP 35
MAP 36

MAP 29
MAP 30

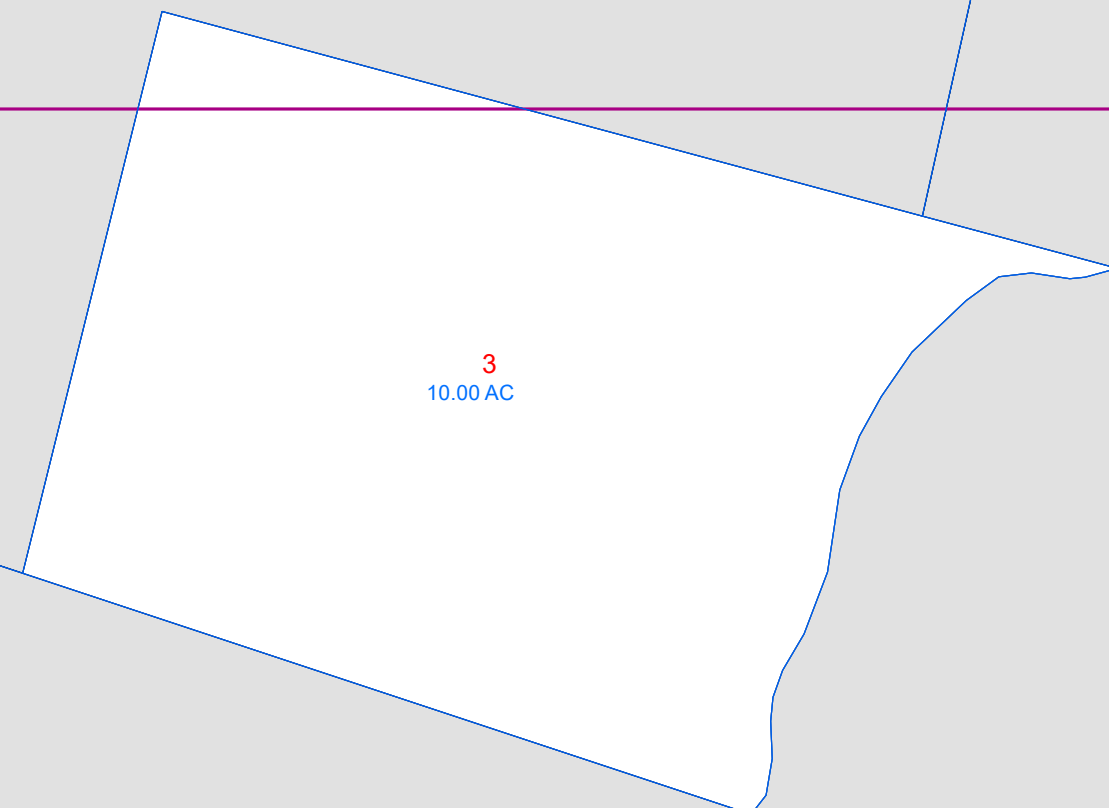
MAP 43
MAP 36

MAP 36
MAP 30

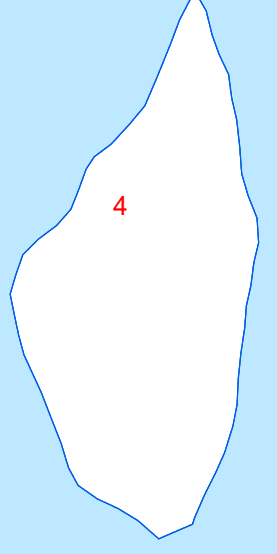
MAP 43
MAP 44

MAP 36
MAP 37

MAP 30



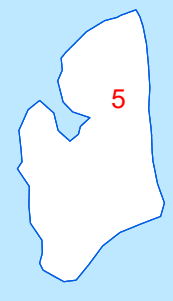
66-57



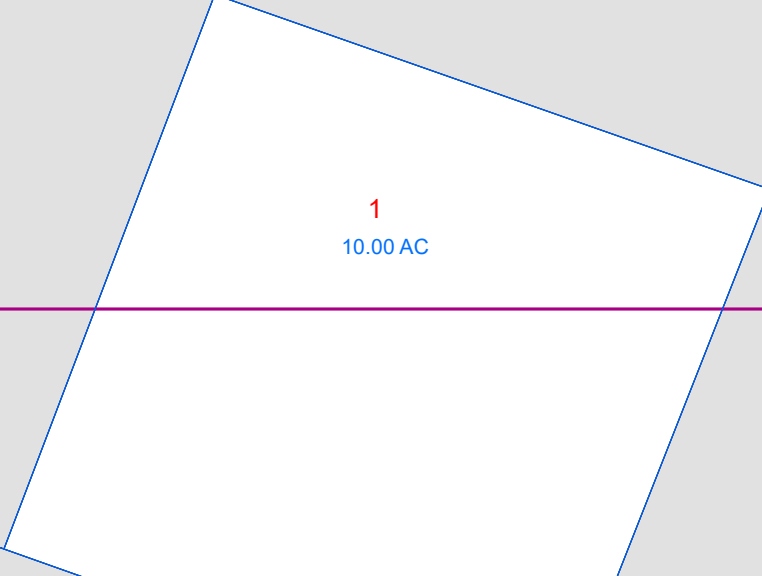
City/Town Boundary

Androscoggin River

Greene



6



Tax Map
36

TURNER
MAINE

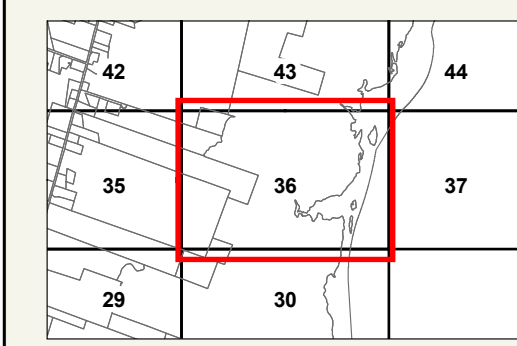


LEGEND

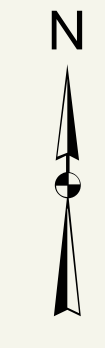
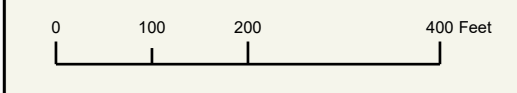
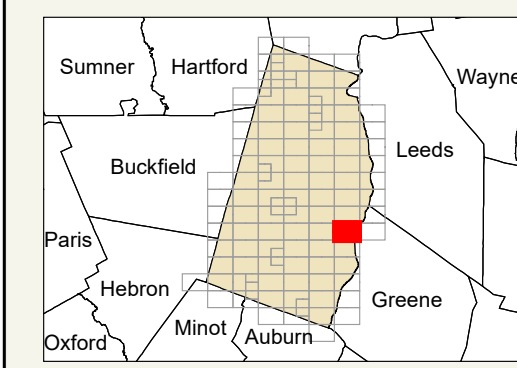
- PROPERTY LINE
- OLD PROPERTY LINE
- PUBLIC RIGHT-OF-WAY
- PRIVATE RIGHT-OF-WAY
- CITY/TOWN LIMIT
- EASEMENT
- UTILITY RIGHT-OF-WAY
- HYDROLOGY
- 3 PARCEL NUMBER
- 1.25 AC ACREAGE
- 1.25 AC +/- CALCULATED ACREAGE
- 160 DIMENSION
- 17 SURVEY LOT NUMBER

FOR ASSESSMENT PURPOSES ONLY NOT FOR PROPERTY CONVEYANCES. THE TOWN OF TURNER AND ITS MAPPING CONTRACTORS ASSUME NO LEGAL RESPONSIBILITY FOR THE INFORMATION CONTAINED HEREIN.

ORIGINAL MAPPING BY
JAMES W. SEWALL COMPANY
OLD TOWN, MAINE



SHEET INDEX



Previous Revisions:
4-1-2010 4-1-2011 4-1-2014
4-1-2015 4-1-2016 4-1-2017
4-1-2019 4-1-2020 4-1-2021

Updated as of April 1, 2023

