

MAP 31
MAP 32

MAP 32
MAP 33

MAP 25
MAP 26

MAP 26
MAP 27

MAP 19
MAP 20

MAP 20
MAP 21

MAP 32
MAP 26

MAP 26
MAP 20

Tax Map
26

TURNER
MAINE

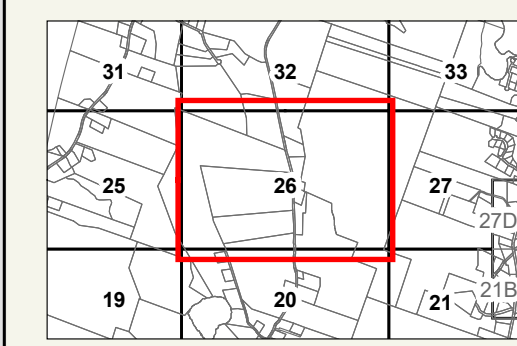


LEGEND

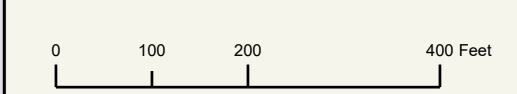
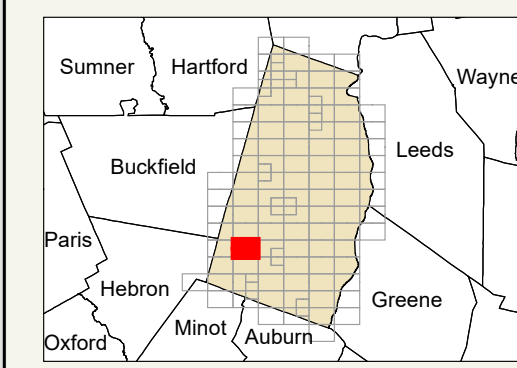
- PROPERTY LINE
- OLD PROPERTY LINE
- PUBLIC RIGHT-OF-WAY
- PRIVATE RIGHT-OF-WAY
- CITY/TOWN LIMIT
- EASEMENT
- UTILITY RIGHT-OF-WAY
- HYDROLOGY
- PARCEL NUMBER
- ACREAGE
- CALCULATED ACREAGE
- DIMENSION
- SURVEY LOT NUMBER

FOR ASSESSMENT PURPOSES ONLY NOT FOR PROPERTY CONVEYANCES. THE TOWN OF TURNER AND ITS MAPPING CONTRACTORS ASSUME NO LEGAL RESPONSIBILITY FOR THE INFORMATION CONTAINED HEREIN.

ORIGINAL MAPPING BY
JAMES W. SEWALL COMPANY
OLD TOWN, MAINE



SHEET INDEX



Previous Revisions:

4-1-2010	4-1-2011	4-1-2014
4-1-2015	4-1-2016	4-1-2017
4-1-2019	4-1-2020	4-1-2021

Updated as of April 1, 2023

