

MAP 31

MAP 25

MAP 19

MAP 31

MAP 25

MAP 19

Tax Map  
25

TURNER  
MAINE

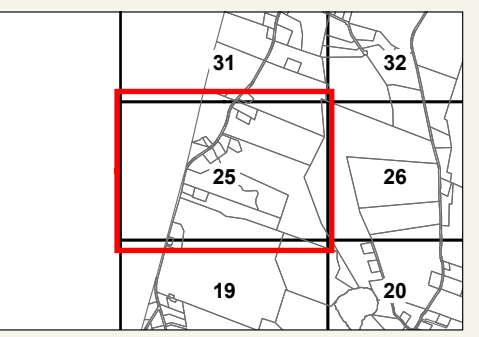


LEGEND

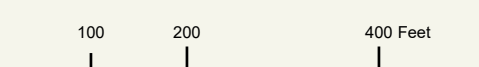
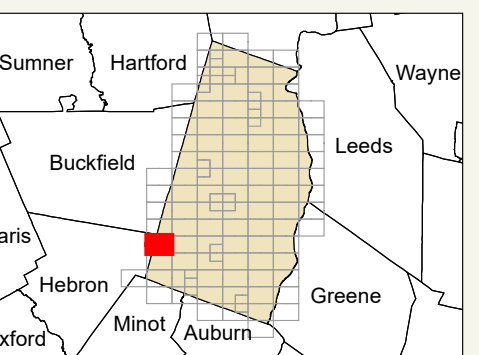
- PROPERTY LINE
- OLD PROPERTY LINE
- PUBLIC RIGHT-OF-WAY
- PRIVATE RIGHT-OF-WAY
- CITY/TOWN LIMIT
- EASEMENT
- UTILITY RIGHT-OF-WAY
- HYDROLOGY
- 3** PARCEL NUMBER
- 1.25 AC ACREAGE
- 1.25 AC +/- CALCULATED ACREAGE
- 100 DIMENSION
- 10 SURVEY LOT NUMBER

FOR ASSESSMENT PURPOSES ONLY NOT FOR  
PROPERTY CONVEYANCES. THE TOWN OF  
TURNER AND ITS MAPPING CONTRACTORS  
ASSUME NO LEGAL RESPONSIBILITY FOR THE  
INFORMATION CONTAINED HEREIN.

ORIGINAL MAPPING BY  
JAMES W. SEWALL COMPANY  
OLD TOWN, MAINE



SHEET INDEX



Previous Revisions:

- 4-1-2010
- 4-1-2011
- 4-1-2014
- 4-1-2015
- 4-1-2016
- 4-1-2017
- 4-1-2019
- 4-1-2020
- 4-1-2021

Updated as of April 1, 2023



Hebron

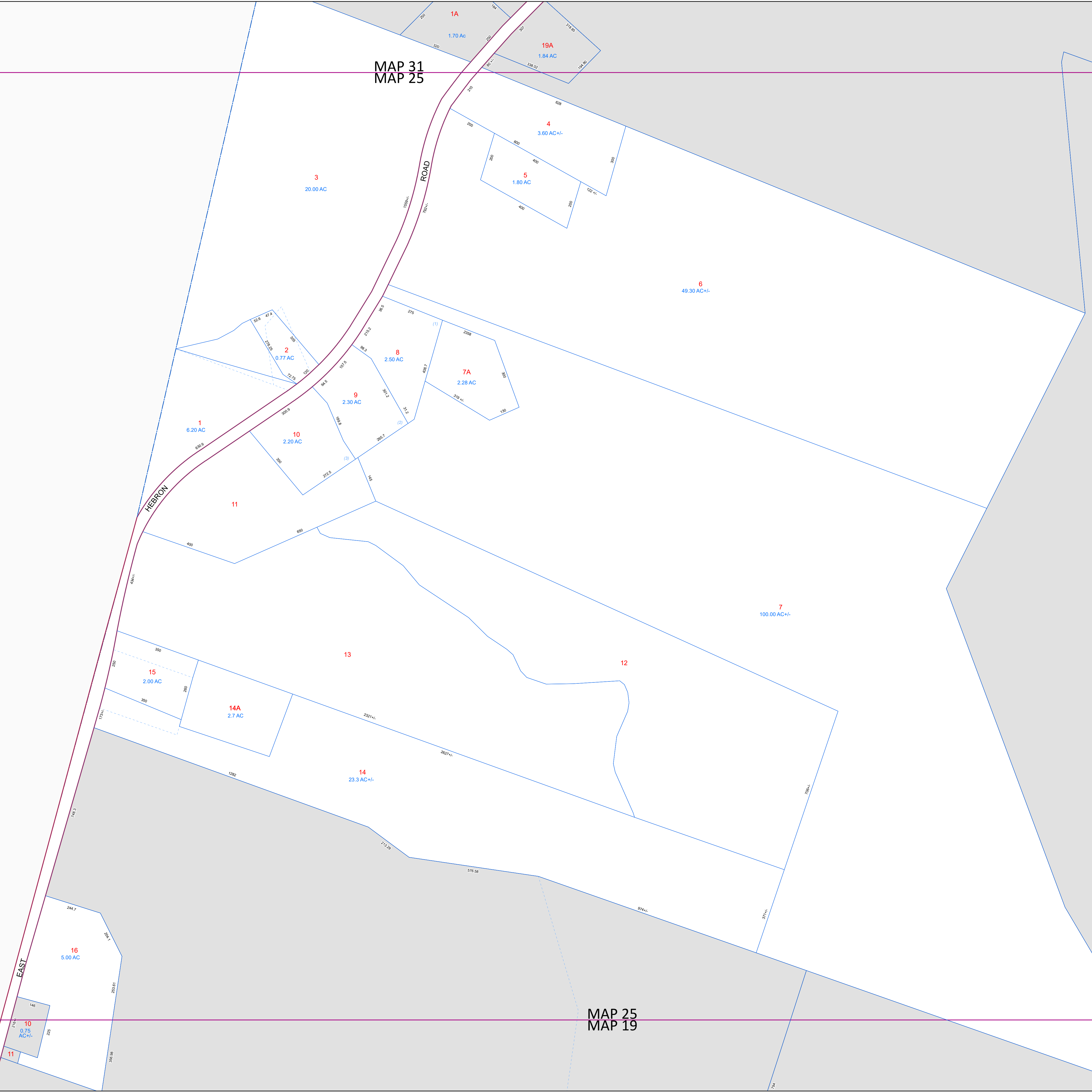
MAP 31  
MAP 25

ROAD

HEBRON

EAST

MAP 25  
MAP 19



10  
0.75  
AC +/-

16  
5.00  
AC

15  
2.00  
AC

14A  
2.7  
AC

14  
23.3  
AC +/-

13

12

7  
100.00  
AC +/-

11

9  
2.30  
AC

8  
2.50  
AC

7A  
2.28  
AC

10  
2.20  
AC

2  
0.77  
AC

1  
6.20  
AC

3  
20.00  
AC

5  
1.80  
AC

4  
3.60  
AC +/-

19A  
1.84  
AC

1A  
1.70  
AC