

Tax Map
23

TURNER
MAINE

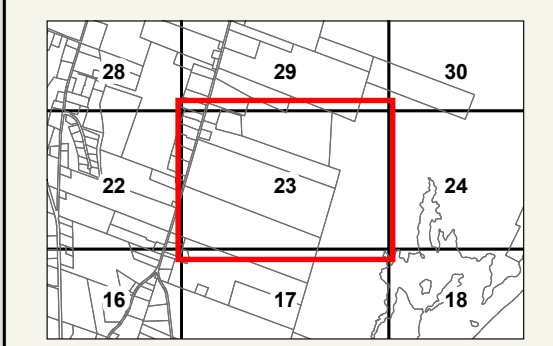


LEGEND

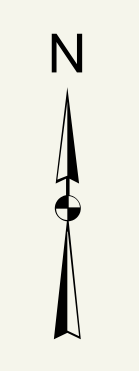
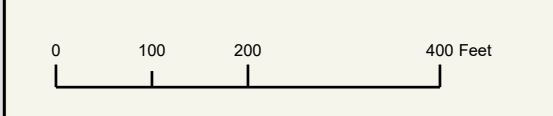
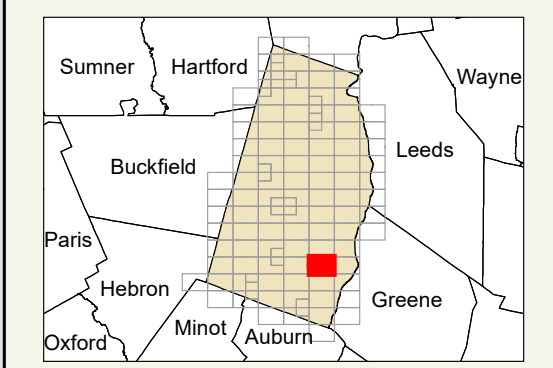
- PROPERTY LINE
- OLD PROPERTY LINE
- PUBLIC RIGHT-OF-WAY
- PRIVATE RIGHT-OF-WAY
- CITY/TOWN LIMIT
- EASEMENT
- UTILITY RIGHT-OF-WAY
- HYDROLOGY
- PARCEL NUMBER
- ACREAGE
- CALCULATED ACREAGE
- DIMENSION
- SURVEY LOT NUMBER

FOR ASSESSMENT PURPOSES ONLY NOT FOR PROPERTY CONVEYANCES. THE TOWN OF TURNER AND ITS MAPPING CONTRACTORS ASSUME NO LEGAL RESPONSIBILITY FOR THE INFORMATION CONTAINED HEREIN.

ORIGINAL MAPPING BY
JAMES W. SEWALL COMPANY
OLD TOWN, MAINE

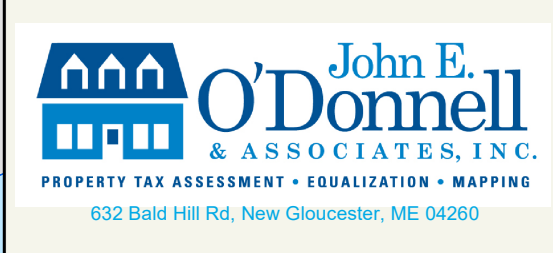


SHEET INDEX



Previous Revisions:
 4-1-2010 4-1-2011 4-1-2014
 4-1-2015 4-1-2016 4-1-2017
 4-1-2019 4-1-2020 4-1-2021

Updated as of April 1, 2023



Androscoggin River

MAP 17
MAP 18

MAP 23
MAP 17

MAP 22
MAP 23

MAP 28
MAP 29

MAP 29
MAP 23

MAP 29
MAP 30