

# TURNER MAINE

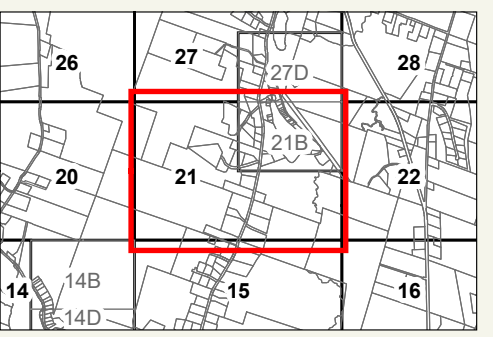


### LEGEND

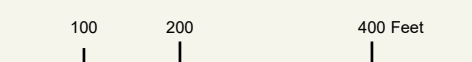
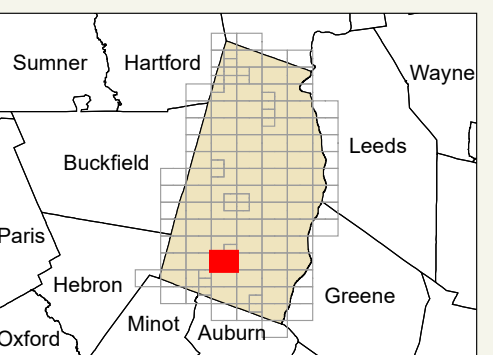
- PROPERTY LINE
- OLD PROPERTY LINE
- PUBLIC RIGHT-OF-WAY
- PRIVATE RIGHT-OF-WAY
- CITY/TOWN LIMIT
- EASEMENT
- UTILITY RIGHT-OF-WAY
- HYDROLOGY
- PARCEL NUMBER
- ACREAGE
- CALCULATED ACREAGE
- DIMENSION
- SURVEY LOT NUMBER

FOR ASSESSMENT PURPOSES ONLY NOT FOR PROPERTY CONVEYANCES. THE TOWN OF TURNER AND ITS MAPPING CONTRACTORS ASSUME NO LEGAL RESPONSIBILITY FOR THE INFORMATION CONTAINED HEREIN.

ORIGINAL MAPPING BY  
JAMES W. SEWALL COMPANY  
OLD TOWN, MAINE

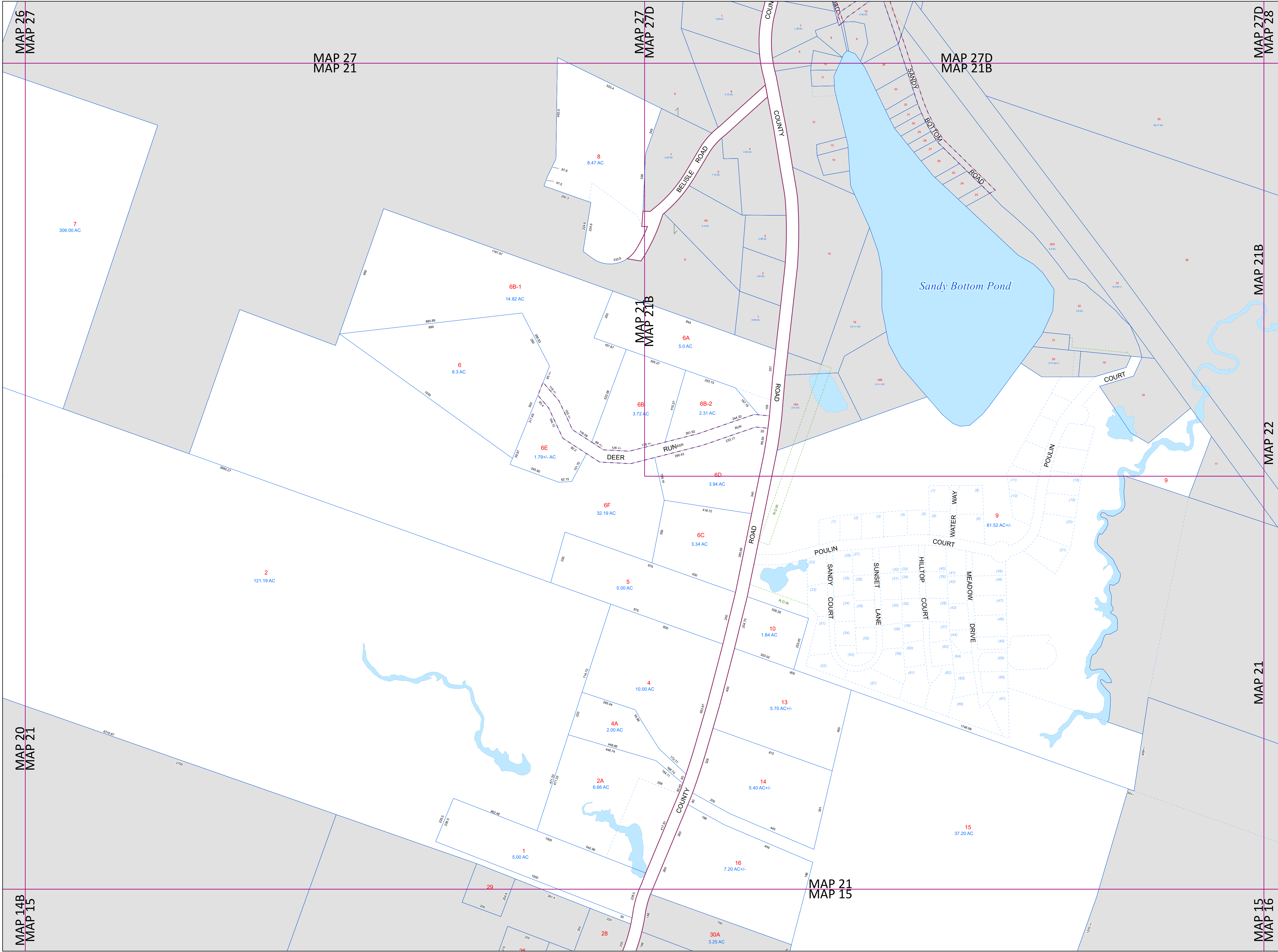


SHEET INDEX



Previous Revisions:  
4-1-2010 4-1-2011 4-1-2014  
4-1-2015 4-1-2016 4-1-2017  
4-1-2019 4-1-2020 4-1-2021

Updated as of April 1, 2023



MAP 26  
MAP 27

MAP 27  
MAP 21

MAP 27  
MAP 27D

MAP 27D  
MAP 21B

MAP 27D  
MAP 28

MAP 20  
MAP 21

MAP 14B  
MAP 15

MAP 21  
MAP 21B

MAP 21  
MAP 15

MAP 21B

MAP 22

MAP 21

MAP 15  
MAP 16