

MAP 25

MAP 25  
MAP 26

MAP 25  
MAP 19

Tax Map  
19

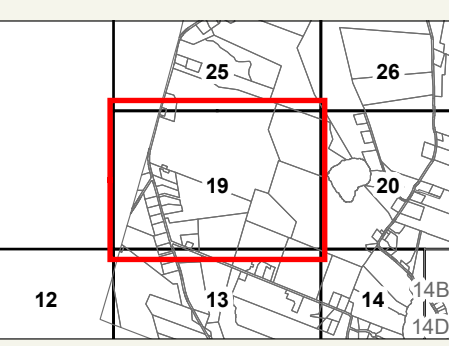
TURNER  
MAINE



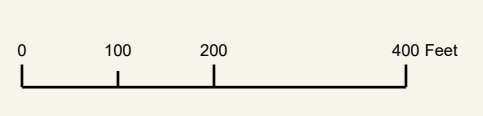
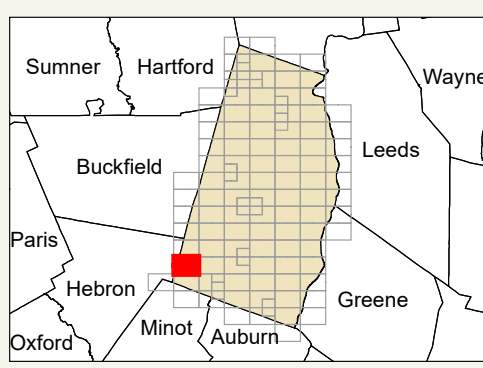
LEGEND

- PROPERTY LINE
- OLD PROPERTY LINE
- PUBLIC RIGHT-OF-WAY
- PRIVATE RIGHT-OF-WAY
- CITY/TOWN LIMIT
- EASEMENT
- UTILITY RIGHT-OF-WAY
- HYDROLOGY
- PARCEL NUMBER
- ACREAGE
- CALCULATED ACREAGE
- DIMENSION
- SURVEY LOT NUMBER

FOR ASSESSMENT PURPOSES ONLY NOT FOR PROPERTY CONVEYANCES. THE TOWN OF TURNER AND ITS MAPPING CONTRACTORS ASSUME NO LEGAL RESPONSIBILITY FOR THE INFORMATION CONTAINED HEREIN.  
ORIGINAL MAPPING BY JAMES W. SEWALL COMPANY OLD TOWN, MAINE



SHEET INDEX



Previous Revisions:  
4-1-2010 4-1-2011 4-1-2014  
4-1-2015 4-1-2016 4-1-2017  
4-1-2019 4-1-2020 4-1-2021

Updated as of April 1, 2023



MAP 19

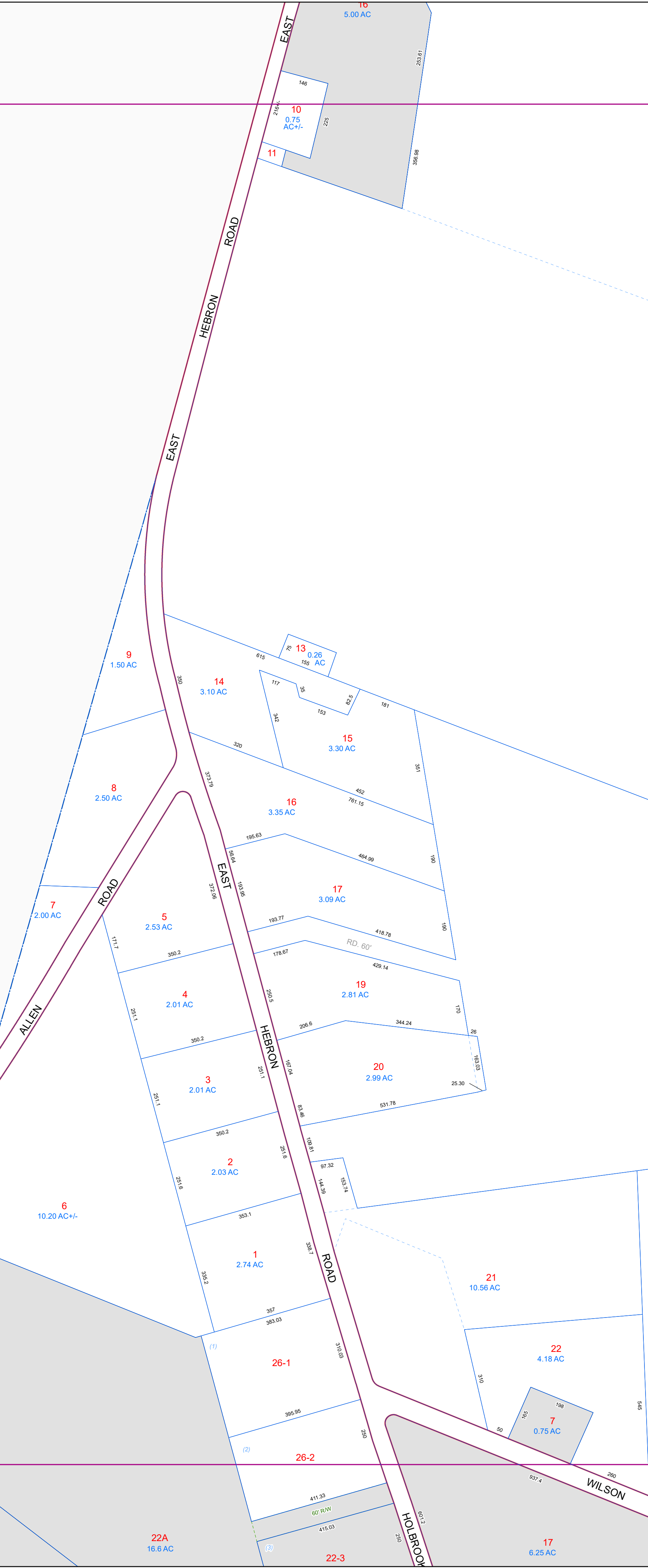
MAP 19  
MAP 20

MAP 12  
MAP 13

MAP 13  
MAP 14

MAP 19  
MAP 13

Hebron



9  
1.50 AC

8  
2.50 AC

7  
2.00 AC

5  
2.53 AC

4  
2.01 AC

3  
2.01 AC

2  
2.03 AC

1  
2.74 AC

26-1

26-2

22A  
16.6 AC

22-3

17  
6.25 AC

13  
0.26 AC

14  
3.10 AC

15  
3.30 AC

16  
3.35 AC

17  
3.09 AC

19  
2.81 AC

20  
2.99 AC

21  
10.56 AC

22  
4.18 AC

7  
0.75 AC

12  
213.80 AC +/-

18  
44.58 AC +/-

23  
36.00 AC +/-

24  
62.70 AC

25  
27.00 AC +/-

8  
33 AC