



MAP 23
MAP 24

MAP 24
MAP 18

MAP 24

MAP 18

MAP 17
MAP 18

MAP 18
MAP 11

MAP 10
MAP 11

MAP 11

Tax Map
18

TURNER
MAINE

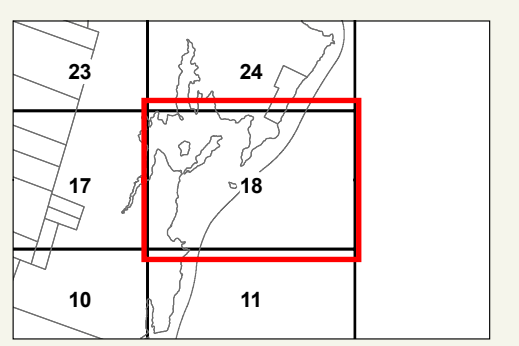


LEGEND

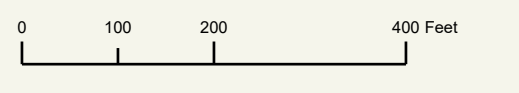
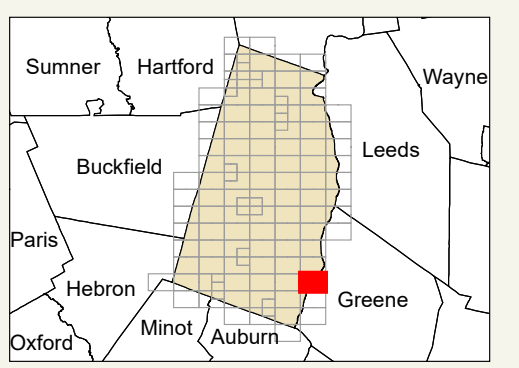
- PROPERTY LINE
- OLD PROPERTY LINE
- PUBLIC RIGHT-OF-WAY
- PRIVATE RIGHT-OF-WAY
- CITY/TOWN LIMIT
- EASEMENT
- UTILITY RIGHT-OF-WAY
- HYDROLOGY
- PARCEL NUMBER
- ACREAGE
- CALCULATED ACREAGE
- DIMENSION
- SURVEY LOT NUMBER

FOR ASSESSMENT PURPOSES ONLY NOT FOR PROPERTY CONVEYANCES. THE TOWN OF TURNER AND ITS MAPPING CONTRACTORS ASSUME NO LEGAL RESPONSIBILITY FOR THE INFORMATION CONTAINED HEREIN.

ORIGINAL MAPPING BY
JAMES W. SEWALL COMPANY
OLD TOWN, MAINE



SHEET INDEX



Previous Revisions:
4-1-2010 4-1-2011 4-1-2014
4-1-2015 4-1-2016 4-1-2017
4-1-2019 4-1-2020 4-1-2021

Updated as of April 1, 2023