

23-3  
1.4 AC

16  
1.50 AC+/-

# MAP 9 MAP 9D

23-2  
1.4 AC

23-1  
1.2 AC

BRODY WAY

24  
3.23 AC

24A  
2.14 AC

3  
2.75 AC

2  
0.53 AC+/-

1  
4.50 AC+/-

29  
8 AC+/-

30  
0.56 AC+/-

31  
0.93 AC

32  
0.19 AC+/-

11

12

13

15

19

19

TALBOT DRIVE

ROAD

(RTE A)

# MAP 9D MAP 3B

20-2  
1.59 AC

8  
0.88 AC+/-

9  
0.84 AC

10  
1.10 AC+/-

11  
0.59 AC+/-

12  
0.12 AC

13  
0.10 AC+/-

14  
0.77 AC

15  
0.16 AC

16  
0.05 AC

17  
0.44 AC

18  
0.45 AC+/-

20  
0.20 AC+/-

21  
0.23 AC+/-

22  
0.11 AC+/-

Lard Pond

20-1  
6.45 AC

20A  
48.4 AC

RED OAK DRIVE

23  
20.82 AC

OAKWOOD DRIVE

DRIVE

ACORN DR

BLUE HILL

Tax Map  
9D

# TURNER MAINE

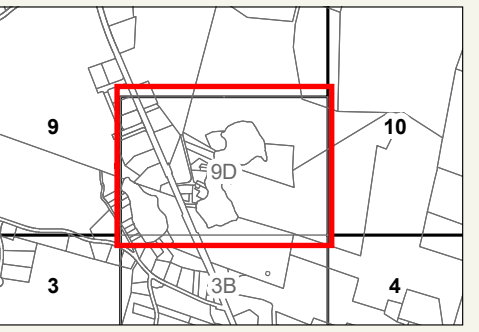


### LEGEND

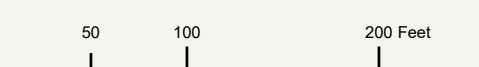
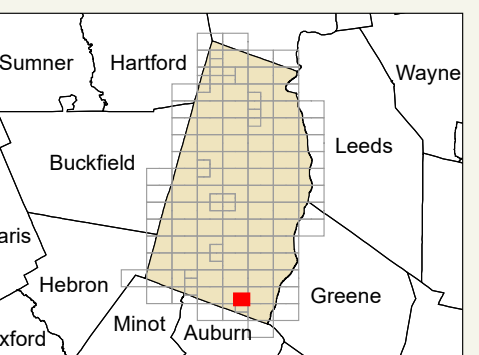
- PROPERTY LINE
- OLD PROPERTY LINE
- PUBLIC RIGHT-OF-WAY
- PRIVATE RIGHT-OF-WAY
- CITY/TOWN LIMIT
- EASEMENT
- UTILITY RIGHT-OF-WAY
- HYDROLOGY
- 3 PARCEL NUMBER
- 1.25 AC ACREAGE
- 1.25 AC +/- CALCULATED ACREAGE
- 100 DIMENSION
- 10 SURVEY LOT NUMBER

FOR ASSESSMENT PURPOSES ONLY NOT FOR PROPERTY CONVEYANCES. THE TOWN OF TURNER AND ITS MAPPING CONTRACTORS ASSUME NO LEGAL RESPONSIBILITY FOR THE INFORMATION CONTAINED HEREIN.

ORIGINAL MAPPING BY  
JAMES W. SEWELL COMPANY  
OLD TOWN, MAINE



### SHEET INDEX



### Previous Revisions:

4-1-2010	4-1-2011	4-1-2014
4-1-2015	4-1-2016	4-1-2017
4-1-2019	4-1-2020	4-1-2021

Updated as of April 1, 2023

