

TURNER
MAINE

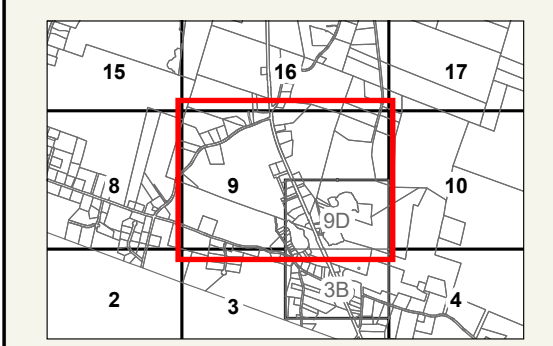


LEGEND

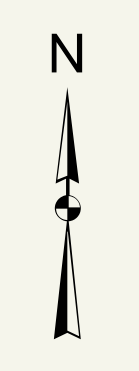
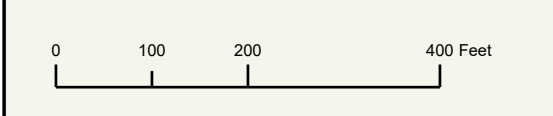
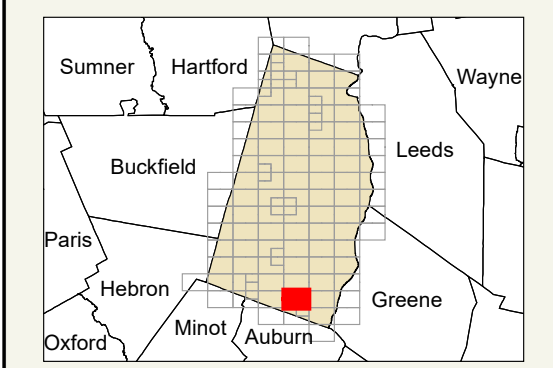
- PROPERTY LINE
- OLD PROPERTY LINE
- PUBLIC RIGHT-OF-WAY
- PRIVATE RIGHT-OF-WAY
- CITY/TOWN LIMIT
- EASEMENT
- UTILITY RIGHT-OF-WAY
- HYDROLOGY
- 3 PARCEL NUMBER
- 1.25 AC ACREAGE
- 1.25 AC +/- CALCULATED ACREAGE
- 100 DIMENSION
- 10 SURVEY LOT NUMBER

FOR ASSESSMENT PURPOSES ONLY NOT FOR PROPERTY CONVEYANCES. THE TOWN OF TURNER AND ITS MAPPING CONTRACTORS ASSUME NO LEGAL RESPONSIBILITY FOR THE INFORMATION CONTAINED HEREIN.

ORIGINAL MAPPING BY
JAMES W. SEWALL COMPANY
OLD TOWN, MAINE

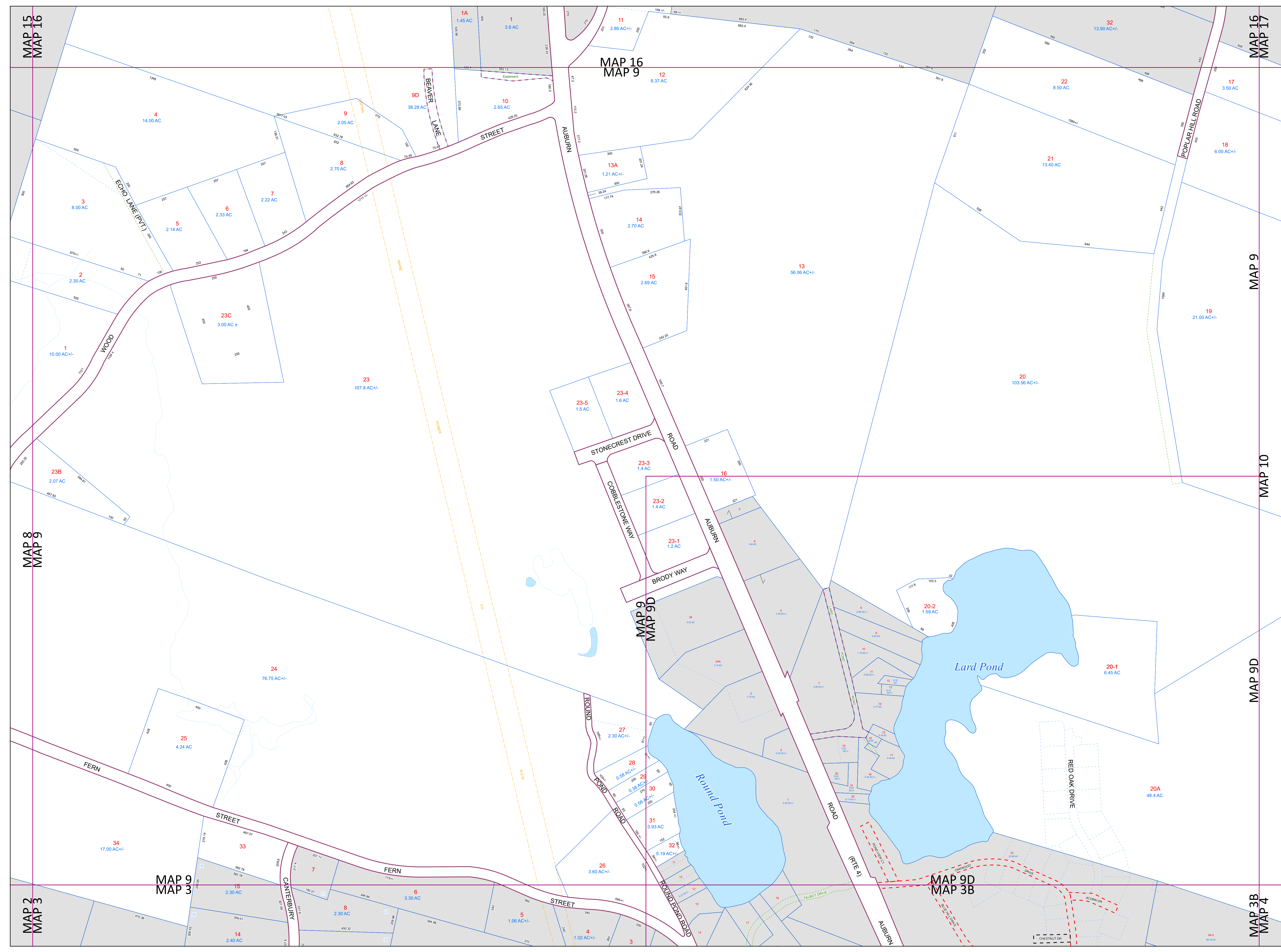
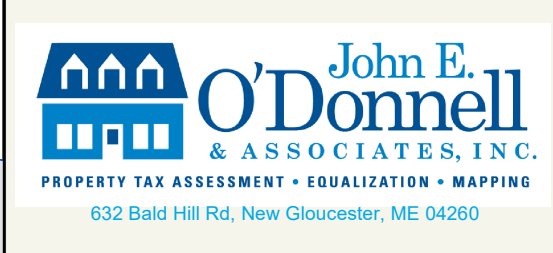


SHEET INDEX



Previous Revisions:
 4-1-2010 4-1-2011 4-1-2014
 4-1-2015 4-1-2016 4-1-2017
 4-1-2019 4-1-2020 4-1-2021

Updated as of April 1, 2023



MAP 15
MAP 16

MAP 16
MAP 17

MAP 16
MAP 9

MAP 9

MAP 10

MAP 9D

MAP 3B
MAP 4

MAP 8
MAP 9

MAP 2
MAP 3

MAP 9
MAP 3

MAP 9
MAP 9D

MAP 9D
MAP 3B