

MAP 7  
MAP 8

MAP 8  
MAP 2

MAP 8  
MAP 9

MAP 2  
MAP 3

Auburn

MAP 2

Tax Map  
2

TURNER  
MAINE

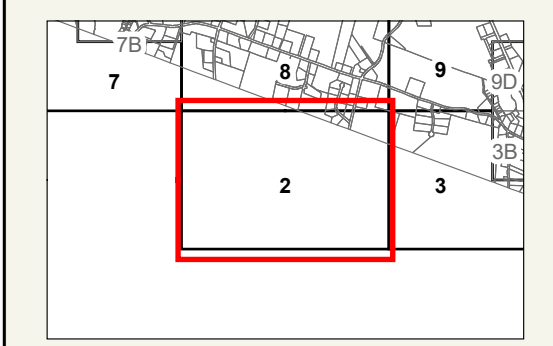


LEGEND

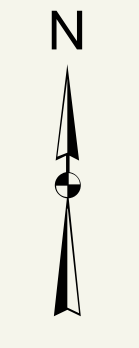
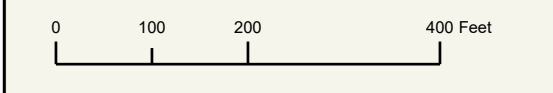
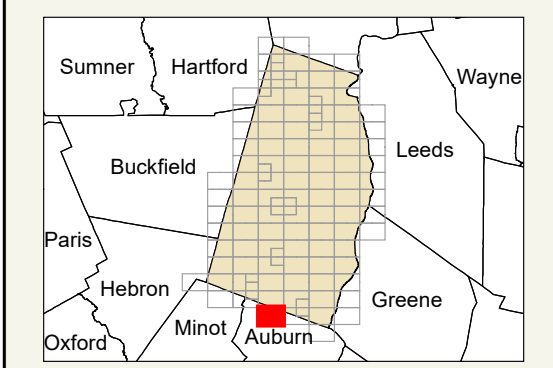
- PROPERTY LINE
- OLD PROPERTY LINE
- PUBLIC RIGHT-OF-WAY
- PRIVATE RIGHT-OF-WAY
- CITY/TOWN LIMIT
- EASEMENT
- UTILITY RIGHT-OF-WAY
- HYDROLOGY
- PARCEL NUMBER
- ACREAGE
- CALCULATED ACREAGE
- DIMENSION
- SURVEY LOT NUMBER

FOR ASSESSMENT PURPOSES ONLY NOT FOR PROPERTY CONVEYANCES. THE TOWN OF TURNER AND ITS MAPPING CONTRACTORS ASSUME NO LEGAL RESPONSIBILITY FOR THE INFORMATION CONTAINED HEREIN.

ORIGINAL MAPPING BY  
JAMES W. SEWALL COMPANY  
OLD TOWN, MAINE



SHEET INDEX



Previous Revisions:  
 4-1-2010 4-1-2011 4-1-2014  
 4-1-2015 4-1-2016 4-1-2017  
 4-1-2019 4-1-2020 4-1-2021

Updated as of April 1, 2023

